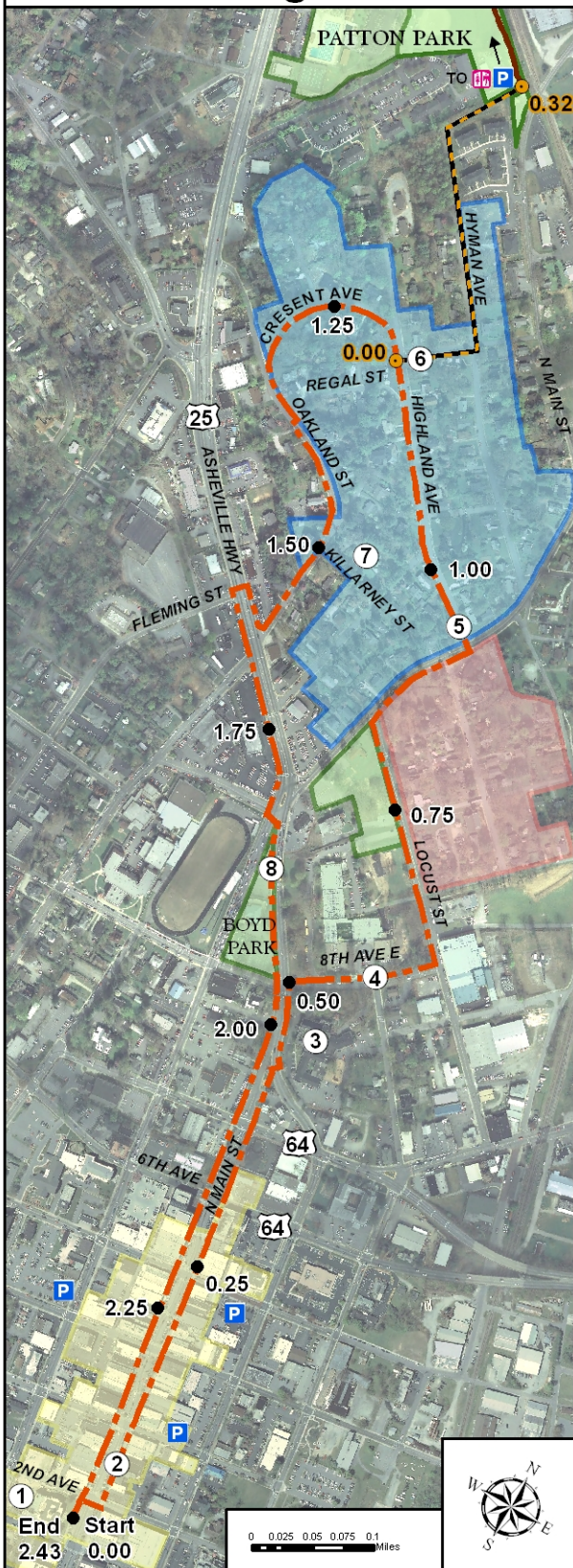


Main St. to Hyman Heights Walking Route



- Primary Walking Route
- Alternate Route to Patton Park
- Patton Park Trails
- Hyman Heights National Historic District
- Cold Spring National Historic District
- Main Street National Historic District
- Parks
- P Public Parking Lots
- Mileage Markers
- ♿ Restrooms



Hendersonville Regional Walking Guide

Walk # 2 of 4: Main St. to Hyman Hts.

Distance: 2.43 miles

Difficulty: The walking route follows paved sidewalks. Moderate slopes are found on 8th Ave. E. and in Hyman Heights.

Highlights: See the corresponding numbers on the map:

1. *Historic Henderson Co. Courthouse:* Gold-domed courthouse was built in 1905.
2. *Downtown Hendersonville:* A variety of opportunities for shopping and dining.
3. *St. James Episcopal Church:* Picturesque Gothic style stone church.
4. Catch a glimpse of Hendersonville and the surrounding mountains from this view.
5. *Hyman Heights Historic District:* Bungalow and Colonial Revival style houses dominate this residential historic district.
6. *Alternate route to Patton Park:* If time allows, visit Patton Park for swimming, skateboarding, and other recreation.
7. *Killarney House:* This Gothic Revival house was built pre-Civil War around 1858.
8. *Boyd Park:* Stop by for mini-golf or tennis.

Caution: Use caution at all road crossings.

This brochure is sponsored by the following:

- City of Hendersonville
- Council on Aging of Henderson County
- Diamond Brand Outdoors
- Henderson Co. Dept. of Public Health
- Henderson Co. Parks and Recreation
- Pardee Hospital
- Partnership for Health

For information or additional maps, please call (828) 698-4600 or visit www.p-f-h.org